



**St Edward's Church, Roath**

# **Community Facilities & Accessibility Project at St Edward's, Roath Volume 1: Options Appraisal**

**Compiled by St Edward's Committee, Roath Parish**

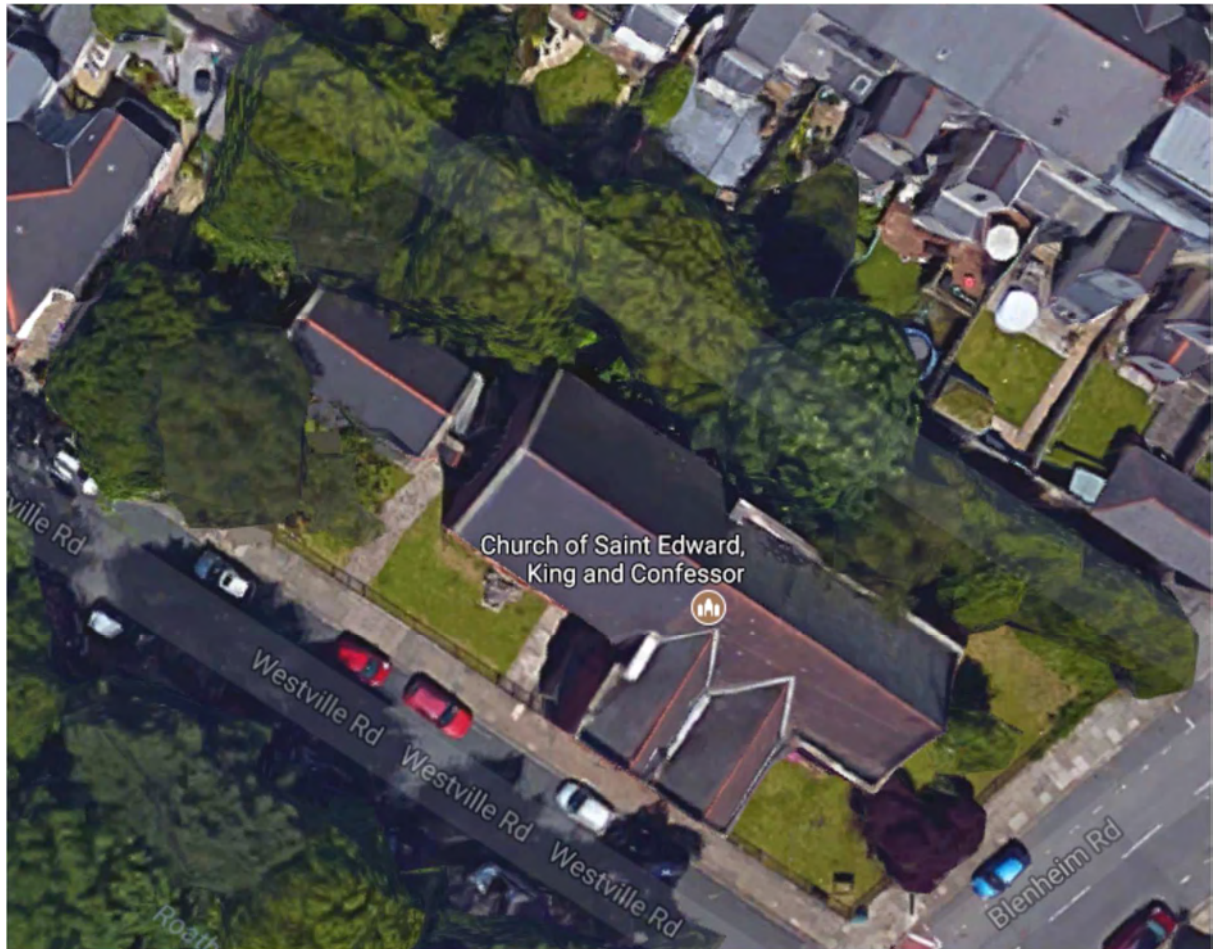
**Church of St Edward the Confessor,  
Roath, Cardiff  
CF23 5DE**

**September 2018**

***Front Cover: View of St Edward's Church, Roath, Cardiff, from the South East***

<b>Section A</b>	<b>Introduction</b>	<b>5</b>
<b>Section B</b>	<b>Historic Context</b>	<b>7</b>
<b>Section C</b>	<b>Current Usage</b>	<b>13</b>
<b>Section D</b>	<b>Proposed Usage</b>	<b>20</b>
<b>Section E</b>	<b>Current Facilities</b>	<b>25</b>
<b>Section F</b>	<b>Letters of Support</b>	<b>30</b>
<b>Section G</b>	<b>Proposals</b>	<b>39</b>

**CONTENTS**



*Aerial view of St Edward's Church, Roath, Cardiff, on the junction of Westville Road and Blenheim Road, just north of Roath Brook.*

## Introduction

This report examines options for developing St Edward's Church, Roath, Cardiff, a thriving centre of worship for over 100 years, to provide additional facilities to accommodate the substantial (and increasing) community use of the site, and to ensure that all facilities are in compliance with accessibility legislation.

The report first considers the historic development of the buildings in response to changes in the requirements of the local community.

Current usage is then explored in more detail, and shortcomings in the provision of facilities are identified, through consultation with the community organisations.

Further developments of community use of the site are also outlined: opportunities that the church would put into practice if the proposed building work goes ahead.

Finally, a series of proposals is explored to show how facilities could be modified and extended to alleviate the shortcomings and to accommodate the developing requirements.

## INTRODUCTION

## Objectives

Roath Parish PCC and St Edward's Church Committee would like to redevelop the porch, WC and schoolroom area of the church site to better accommodate the growing needs of the congregation and community.

It is envisaged that this would include

- Redevelopment of the existing school room and entrance to create an accessible community space that meets the needs of our current users and makes provision for future growth.
- Updating of the current provisions whilst also providing new facilities, in compliance with accessibility legislation, such as new accessible toilets, a new kitchen, a larger community room that provides for flexibility in use, and provision for external and internal storage.
- Alterations to the principal entrance ensuring that all of our visitors can access our building readily and easily.
- Off-street disabled parking
- Development of the church grounds for use in gardening therapy and to promote engagement with our community.

## Brief History

When houses were built on the lower slopes of Penylan Hill in the first decade of the 20<sup>th</sup> century, the need for a place of worship was identified and a temporary iron building was erected on the north bank of Roath Brook and dedicated to St Edward the Confessor. It opened for worship in March 1915. On 11<sup>th</sup> September 1919 it was destroyed by fire.



Temporary building 1915-1919

A fortnight before the fire, the local community had decided that there should be a Parish Church War Memorial, and this decision was implemented by building a permanent St Edward's Church as a memorial for the whole parish, of those who fell in the War.



Chancel and sanctuary, with visiting American Choir Chamber Bravura

The present chancel was built to plan, but the financial constraints of the early 1920s slump meant that the planned nave was replaced by another temporary building.



Nave

The temporary nave was finally replaced when the present nave (about half the size of the original plan) was built and consecrated in 1968. In that period, the first WC facility was added upstairs above the vestry (totally inaccessible for many churchgoers).

During the 1970s and 1980s the church community made a conscious effort to attract and accommodate young families. This changing demographic created a need for Sunday School and Junior Church facilities. That need was met by building a schoolroom at the west end of the church in 1990. New WC facilities were also added in the porch area which were compliant with contemporary accessibility legislation.



Schoolroom – often used as a rehearsal room in recent years

## Changing Community Use

Building on the existing reputation for music in St Edward's and the excellent acoustics of the church, during the 1980s local music teachers were invited to hold pupil concerts there, and in September 1990 an orchestra formed from an evening class by parishioners Fred and Rita Waite at the Howardian Centre made its home there.



St Edward's Orchestra giving a concert in the chancel

In 1994, professional mezzo-soprano Sara Clethero, Head of Voice at the London College of Music, based Opera Company "Youthful Promise" (later Opera Mint Wales) at the church.



Opera Mint Wales

An annual Music and Arts Festival was established in 1990 around the Feast of St Edward (13<sup>th</sup> October) and continues today, giving opportunities for local musicians, choirs and ensembles to perform to a “sympathetic” audience.



Cardiff and Vale of Glamorgan Symphonic Brass perform every year at St Edward's Festival

More groups of musicians soon joined the growing community, and in 2009 the Parochial Church Council established St Edward's Music and Arts Centre to promote and coordinate their activities.

As the community use of the site has been developed it has become clear that this is no longer "the Church" providing facilities for the wider community. Rather it is a large community (over 300) of people who share aims and responsibilities, and care about each other. It is a community drawn from all walks of life, and from quite a large area. Many feel that what happens at St Edward's is worth travelling some distance to take part in, and worth the contribution of significant effort.

## St Edward's Music and Arts Centre

The Centre exists to facilitate and encourage music and arts, particularly amateurs and young professionals, in the local community. It has constituent organisations that rehearse, hold meetings and give performances in the church and schoolroom. Several series of concerts are also organised: monthly "coffee concerts" by local musicians on Saturday mornings, Spring concerts on Saturday evenings, Piano concerts on Sunday afternoons, a Jazz month, and the annual Music and Arts Festival in October. There is considerable interest in participating in all these concerts, and the programmes are usually booked a year or so in advance.

## CURRENT USAGE

In 2009 an annual community arts festival Made in Roath was established, which usually happens to coincide with St Edward's Music and Arts Festival. Each year St Edward's Church hosts several of the Made in Roath events (and usually some of the Festival concerts are included in the Made in Roath programme). In October 2017 the church hosted an exhibition, two art installations, a workshop and a book launch.

The Music and Arts Centre's constituent organisations continue to grow, and now include:

- St Edward's Church Choir
- St Edward's Orchestra
- Opera Mint Wales
- Opera in Situ
- The Rock Choir
- The Penylan Singers
- South Wales Clarinet Choir
- Pavane Early Music Consort
- Cardiff Friendly Strings
- Cardiff Recorded Music Society
- Julian Martin's Jazz Workshop
- Claire Syder's Creative Writing Course

All of these organisations have community provision at their heart. For example, Pavane perform mediaeval music at Cadw sites; Cardiff Friendly Strings is organised by musicians from Welsh National Opera to provide opportunities for learners to play in ensembles; Opera in Situ takes opera out into the community, making it accessible to all. Also the UK-wide Rock choir organisation has the Red Ribbon 'Big Heart' Award recognising it as “intrinsically generous and passionate about volunteering, fundraising and having an impact on the local community”; and Jayne Thomas, who promotes several series of concerts at St Edward's each year, has received the Leonard and Marian Jones Music in the Community Award for “an outstanding contribution to the links between music and the community, in and around the South Wales region”.

Other community activities on the site, designed to promote physical and mental well-being, are supported and organized by members of the church and the wider community that now identifies with the building. They currently include:

**Community Police.** Since June 2014, The Penylan Neighbourhood Policing Team have used the schoolroom as a base whenever it is free. They hold “Cuppa with a Copper” drop-in sessions some evenings.

**Public meetings** are also held in the schoolroom from time to time, including voting for General, Local and Welsh Assembly Elections. 2015-2017 the Roath Brook Flood Risk Management Scheme has held consultation meetings there.

**Beginners' Yoga.** Organised and led by a member of the congregation, the Yoga classes were started in March 2017 one session a week, and have now grown to four sessions a week.

**Grandparents Raising Grandchildren.** A new venture in early 2018, this support organisation holds meetings in the schoolroom on the last two Wednesdays of each month.

### **Forget Me Not Café**

This is an initiative for those living with dementia, recovering from a stroke, and other vulnerable people who need a friendly, safe environment in which to recover and regain their confidence. The initiative grew from collaboration with other local churches including Albany Road Baptist Church and St German's Church, where other groups meet on different

afternoons, and was supported by members of St Margaret's Church, and members of the various organisations that are based at St Edward's, as well as St Edward's congregation. Existing provision did not include a weekly meeting, and this was identified as a weakness. With the broad support centred around St Edward's it was felt that this could be rectified, and the Café was launched with weekly meetings on Tuesday afternoons in May 2017.

Within a few months it was apparent that the Café was meeting a real need in the local community, not only for those living with dementia or recovering from stroke, but also for many other vulnerable members of the community, including the carers themselves, the bereaved, the lonely, and some who just have difficulty relating to others. There are rarely fewer than 20 attending, and often many more, severely stretching the available resources.

Local musicians (including several from our own Music & Arts Centre) and experts in areas such as physiotherapy regularly volunteer to entertain and to lead community exercises.

The impact on the local community is clearly expressed by the generous praise on social media (facebook, twitter and Instagram).



Pavane Early Music Consort



South Wales Clarinet Choir



Gentle Rain Jazz Workshop



Launch of Festival Art Exhibition



Forget Me Not Café



Made in Roath Exhibition



Beginners' Yoga



Rock Choir



Coffee Concert

## Overview

The proposed development of the site is fully justified by existing usage, and predicted increase in take-up, but in an active and vibrant community it is inevitable that people will think about new vistas that will open up when constraints are removed. What new things will we be able to do if we design the new facilities carefully?

The ideas presented here are by no means exhaustive, and they are largely influenced by the particular skills that current members can offer. That is our preferred method of working, building on existing skills and relying mainly on people who have a track record of commitment to our aims, but we are also willing to “buy in” skills if the need is acute.

## Gardening as Therapy

Gardening is widely recognised as a medium that can transform lives, improving physical and mental health, reviving communication and thinking skills, and the ability to mix socially and make friends. With the availability of the church grounds, it is a low-cost high-yield option for our existing Forget Me Not members, and particularly relevant as we extend that membership to include the lonely, the bereaved and so on.

If we are able to implement the project in its entirety we will have the means to store equipment externally, with raised beds to enable access to all our members. But this is some time

away, so we are embarking on a plan to accelerate this aspect of our work.

With the help of a grant of £1000 from Age Cymru, and the “muscle” of local volunteers “Good Gym”, we are clearing the church cellar which used to house the heating system, but is now redundant, to enable us to store the large variety of tools required (some with long handles, others with special grips etc). While it is not as good as ground-level storage, this will enable us to bring the work forward by at least a year. If this is as successful as we hope it will be, we will run a separate “gardening club” for anyone in the community who can benefit from this activity.



Forget Me Not Café taking part in the Gardening Project

## **Local schools**

St Edward's is one of the official evacuation locations for the younger pupils at our local primary school. Fortunately it has never been used, but we would like to have contingency plans in place. At present, the main church building is large enough and the chairs are more comfortable than most churches can offer, but the single easily accessible toilet is clearly inadequate for any extended period, and the lack of a food preparation area is an obvious drawback.

We have also been approached by another local school about the use of the site for after-school or vacation activities. Again, the limited toilet facilities and lack of food preparation currently make this impossible.

## **Meetings/Training Sessions**

The schoolroom is regularly used as a polling station, and we have frequently hosted public meetings to discuss local issues, and recently a diocesan safeguarding course for people from churches in Cardiff. The site is ideal for the logistics of such meetings, as 100 can be seated in the main auditorium, which is always well heated, and there are two substantial rooms for "break-out" areas. The limited toilet facilities and poor accessibility often prevent us from engaging further in this way with the local community. And for those who man the longer sessions, such as the polling station, a kitchen area would greatly improve the experience.

## **Rehearsals and Workshops (Music and Arts)**

Our Music and Arts organisations frequently hold workshops. Also visiting organisations coming to perform in Cardiff and the Vale of Glamorgan often use St Edward's to gather for a final rehearsal – in recent years, regulars include the Nidum Ensemble from Neath and OPRA Cymru from Blaenau Ffestiniog.

Also from time to time we welcome touring choirs and orchestras from abroad, and they often require substantial rehearsal time.

All these different types of sessions are often open for people to call in and listen, and in some cases take part. Ideally we would like to advertise them as fully accessible, but the toilet facilities are inadequate and the informal format requires more space to be made available.

## **Baking Bread**

One member of St Edward's congregation is a "Bread Angel". This is a network of award winning bakers who teach a range of excellent bread baking classes all over the UK. She is willing to provide classes and we are particularly interested in involving some of our more vulnerable people such as the isolated, lonely and bereaved. Clearly this is totally dependent on the appropriate kitchen facilities.

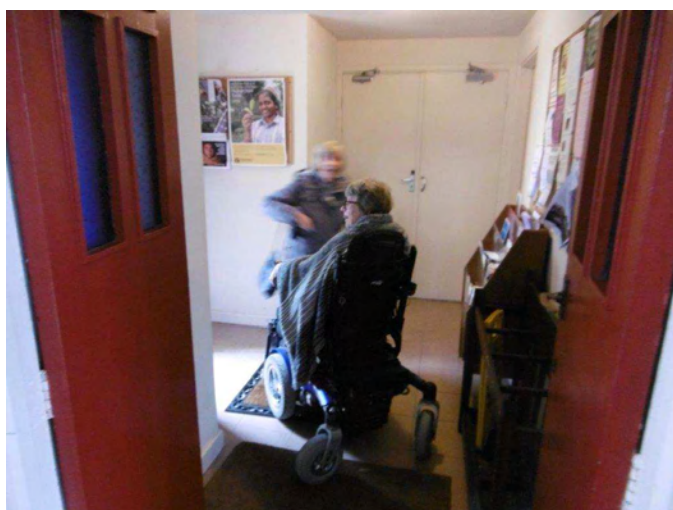
**Basic Kitchen Skills**

When people become isolated and lonely, one of the vital skills that is often lost or reduced is basic food preparation or just the ability to make a cup of tea. While we will not be equipped to offer comprehensive cooking facilities, a great deal can be done to help people who are developing a fear or aversion to aspects of basic work in the kitchen, provided accessible facilities are available.

## Path and Entrance



The entrance path to the porch is breaking up and difficult to negotiate for people with mobility issues.



The door from the porch into the nave is too small, and not well designed for wheelchair users, those with mobility issues and the visually impaired.

CURRENT FACILITIES

## WC Facility



Schoolroom door from porch



WC door from porch



The entrance to the schoolroom from the porch is cramped. Also when the second schoolroom door is open it impedes access to the WC.



Although the WC room is a large space, the toilet and sink are not accessible for all. Neither are there any handrails or baby-changing facilities



This is also the only downstairs WC facility, which is totally inadequate for the number of people currently using the building.

## Schoolroom



A small walk-in cupboard houses the schoolroom central heating boiler and serves as the washing up area.



A table in the corner of the schoolroom provides the tea-making facility, and storage area for cups and equipment for the community organisations.



The room itself is well used, but often rather crowded. Above: Forget Me Not Café meeting; below: reception after a church service.



## Regular Users of the Church and Schoolroom

Organisation	Frequency	Attendance
Main Church Service	Weekly	50
Church Choir	3 times a week	15
Orchestra	Weekly	40
Opera Mint	Fortnightly	20
Opera in Situ	Fortnightly	20
Rock Choir	Weekly	60
Penylan Singers	Weekly	25
Clarinet Choir	Fortnightly	25
Pavane Early Music	Fortnightly	8
Friendly Strings	Monthly	35
Recorded Music Soc.	Weekly	25
Jazz Workshop	Weekly	18
Creative Writing	Weekly	10
Yoga	Weekly	36
Forget Me Not Café	Weekly	25
Community Police	Daily	3
Public Meetings	About 6 a year	20-100
Grand parents	Twice a month	5
Concerts	60-70 per year	40-100

LETTERS OF SUPPORT

## Typical Weekly Schedule

	Sun	Mon	Tue	Wed	Thu	Fri	Sat
<b>Morning</b>	Eucharist	Yoga (2 sessions)		Eucharist	Rock Choir	Creative Writing	Morning Prayer and Coffee Concert
<b>Afternoon</b>	Cardiff Friendly Strings		Forget Me Not Café	Kinship Gems	Penylan Singers		Pavane Early Music
<b>Early Evening</b>	Choral Evensong	Evening Prayer	Evening Prayer		Evening Prayer		Rehearsal
<b>Late Evening</b>	Opera Mint	Jazz Workshop and Orchestra	Yoga (2 sessions)	Clarinet Choir and Recorded Music Society	Church Choir	Rehearsal	Concert

## Letters of Support

### Opera Mint Wales

NAME: Opera Mint Wales (Sara Clethero)

We are a community music training group who specialise in high-level training for community participants, and making available to them world-class tuition and other support (such as Alexander Technique). This is based on an innovative frame which has attracted international interest.

We have been using St Edward's for music sessions and group activities for local participants and others for about 20 years, and the use of a friendly, accessible building has made it possible to serve the local community and build links between our participants and local professionals and resources.

We use the building for regular meetings and for concerts about 3-4 times a year. Concerts have been greatly enhanced by the new piano, which has put the whole building on a completely different level as an arts centre.

It is difficult to imagine that this work would be possible without the support and encouragement from those who run St Edward's centre.

Our participants are drawn from South Wales and occasionally also the West Midlands, including several disabled and socially disadvantaged members.

The support which we receive from members of the St Edward's community, in organising and facilitating events and meetings is quite extraordinarily effective, and also very kind-hearted! I have never come across anything like it anywhere else, in my very long experience of running community and university-based events!

As already stated, the piano is a huge advantage, as is the acoustic and the singing-friendly environment.

Features which would impact positively on the centre include

1. *access from the outside (the paths can be slippery/are uneven/have small holes in them).....*
2. *access once inside, the rear doors are very narrow, from outside into the porch and from the porch into the main part of the church*
3. *the lavatory, is unsuitable for wheelchair users/*
4. *the schoolroom, is damp/lacks ventilation/*

I am delighted to offer heart-felt support for their application for support for further developing the facilities at the church.

Sara Clethero ([sara.clethero@operamint.co.uk](mailto:sara.clethero@operamint.co.uk)) 07976 388523

## Cardiff Recorded Music Society

I am Chairman of the Cardiff Recorded Music Society which meets each week between September and March in St Edward's Music & Arts Centre. We are a small group of about 30 members and have attendances at our meetings of between 15 and 20. We have been using the centre for the past 4 years after having to vacate our previous venue.

We are essentially a music appreciation society, focusing mainly on classical music, with speakers – both professional and amateur – giving talks on a wide range of topics and illustrating their subject with recorded music examples. Given our small numbers, we find the centre adequate for our needs in regard to its location and modest hire charge, and our contacts at the church are always extremely helpful and welcoming.

There are drawbacks. Although the size of the room is sufficient to accommodate our normal attendances, we do suffer from a shortage of circulating space, especially when it comes to our refreshment break half way through our evenings. Access into and out from the building can present problems, particularly during autumn and winter evenings. The kitchen and toilet facilities are also barely adequate. So we would certainly support the kind of improvements to the centre the church have in mind.

Although small in terms of membership, our society is confident that it can continue for the foreseeable future and any improvements along the lines suggested could only help our cause and, we hope, improve its appeal to the local community.

Geoff Trinick

## St Edward's Orchestra

**Alison Dite** 2 GELLIAGER STREET, CATHAYS, , CARDIFF, CF24 4LA [alison.dite@ntlworld.com](mailto:alison.dite@ntlworld.com)  
 TEL 029 20400975 MOBILE 07837 057251

9 December 2017

Dear Sir,

I am the conductor of St Edward's orchestra, which rehearses at the church. I have conducted the orchestra for some 15 years, but the orchestra was founded in 1983, initially rehearsing in a local school, moving to the church in 1991. When I took on conducting the orchestra there were 14 players. We now have between 35 and 40 regular players with a full wind and brass section and timpani. We rehearse weekly at the church during term times. We hold an orchestral concert at the end of each of the three terms per year, plus we hold regular concerts in conjunction with the church choir in the yearly festival in October, at Christmas, and at Easter. All of our regular members are given the opportunity to perform a concerto with orchestra if they wish to, plus, we have several professional players from the Welsh National Opera orchestra and the BBC National Orchestra of Wales who regularly perform with us as soloists. Our players come from all over Cardiff – many are within walking distance, some come from the other side of Cardiff, and some from further afield such as Tongwynlais and Newport.

As well as orchestra concerts, three times per year we hold what we term "Soloists' Concerts" where members of the orchestra, who wish to, may perform a piece with piano accompaniment, or get together with other members to perform a duet, trio, string quartet, or perhaps sing in our madrigal group. This is an excellent opportunity for people to perform in an informal setting – many people who perform in these "soloists' concerts" are doing so for the first time since they were at school. All our concerts are very well attended, often with the church being pretty near full seating capacity.

We also organise "string workshop" days where our string section can explore Baroque repertoire.

We feel very fortunate indeed to be able to rehearse and perform at St Edward's, where we are always made to feel very welcome. The acoustic in the church is excellent and extremely flattering, our subscription fees are very reasonable and it is easy to park nearby in its quiet location.

I feel that a Community Grant would considerably enhance our experience and convenience at St Edward's as follows: The access from the outside of the church is beginning to be in a poor state of repair and could constitute a slip or trip hazard and needs updating/improving. With larger instruments, the access into the main body of the church is rather difficult, and cellos and double basses can have difficulty fitting through the small double doors, and these doors are not airtight and let in cold draughts in the winter, plus noise from the schoolroom/from us to the schoolroom when other activities are taking place at the same time. The lavatory, although spacious, is not suitable for wheelchair users, or those with mobility problems (some of our members are in their 80s). For most of our members, the rehearsals are also a great social occasion and our tea break at half time is enjoyed by all. At the moment we have very limited and cramped facilities in which to prepare tea and coffee, so I feel that a larger kitchen arrangement would really enhance such occasions, as well as being used for refreshments during concert intervals.

Yours faithfully,

Alison Dite

## Cardiff Friendly Strings

Dear Alan, it has now been a year since Richard Barlow and I started Cardiff Friendly Strings. St Edward's was recommended to us as a suitable venue by Alison Dite, who runs the St Edward's orchestra. She and I have worked together for some years now as a duo, so I've learned to respect her opinions.

I was immediately very appreciative of how easy and flexible you were to enable us to start this group with minimal personal financial risk: we had no real way of knowing how much demand there would be for an adult beginner string group, even though a few people had expressed an interest. It turns out there was a significant demand. Our monthly group has attracted around 40-50 players sometimes, never dropping below around 20. As well as players who have come along on their 'second' instrument, there are a good few who have told us that they have not played for 20/30/40 years... Including my wife!

I feel, therefore, that we are offering a genuinely worthwhile experience to many people. This has been made possible with your support and encouragement.

Our last meeting concluded with an informal 'concert' to which members of the church, and players' friends and family members were invited. I believe several parishioners attended so I very much hope you will feel that, as well as benefiting from the church ourselves, we are giving something back to the community.

We find the church ideal in many ways; a fine acoustic, easy to arrange seats (rather than benches) plentiful parking and always a comfortable temperature... I'm sure a cold church would immediately put off a lot of our players.

I understand that you are seeking funding to make improvements, so I would like to suggest possible improvements that would assist us in future. Perhaps most urgently would be improving the toilet facilities; we take a break in the middle of our sessions, one downstairs toilet between 40/50 people can be a challenge. There IS another toilet upstairs, but it takes a long time to refill, and the staircase would be quite dangerous for less able folk. I'm guessing the downstairs loo is probably quite a challenge for disabled people too. Whilst we currently don't have any wheelchair users, we do have a few people with limited mobility.

We also have a few players with large instruments so both the access doors, internal and external, and the pathways could be improved. The lighting is quite usable, but we could always use a little more!

We do not use the schoolroom, so it is difficult for me to make informed suggestions here, but, were it to be enlarged, we might be able to rehearse in there sometimes, when there is a clash with other groups. As is happening in January and February 2018.

All that said, I can only repeat my appreciation for the whole 'St Edward's experience' that you have provided. I'm sure the warm atmosphere is a large part in why people keep coming back.

Best,

Philip Heyman (principal viola, Welsh National Opera)

## Jayne Thomas (conductor, pianist, organiser of concert series)

My association with St Edward's began when I moved to Cardiff, 27 years ago, Alan Mayer very kindly offered the use of the Church for my Pupil Concerts.

The Church is a wonderful building with great acoustics for concerts, particularly singing, and over the years I have performed in and organised many concerts at St Edward's.

The Church has been happy to help me run monthly Coffee Concerts for 8 years. We regularly get 40 people, and quite often more. There is always someone on hand from the Church to help with publicity, refreshments, etc. Considering almost all the concerts I have done over the years have been for numerous charities, not St Edward's itself, this has never been a problem. I think this is amazing. The members and volunteers are always friendly, accommodating, supportive and encouraging.

As well as the monthly Coffee Concerts I put on Spring Concerts and a series of Jazz Coffee Concerts, which are also well attended by the local community.

Over the years I have also rehearsed several 'ad hoc' groups at St Edward's, 'The Sapphire Singers' a ladies choir of about 20 singers for 4 years. The Brahms Choir about 30 singers, for 2 years.

St Edward's has always been forward thinking, its use as an Art Centre is fantastic. I think more churches could do this. I have always been made welcome and nothing is too much trouble. There is always someone on hand to provide access to the Church. It makes no difference if you are a church member or not, the welcome is always the same. Many people who have attended the concerts I put on have remarked on this, and are also surprised that there is never any 'hard sell' to come along to a service ever.

For the last 3 years I have used Edward's to rehearse my Pen-y-lan Singers. This is a weekly session, with up to 25 members.

St Edward's is a fantastic rehearsal space, with great acoustics and TWO pianos. There has always been a good piano to use, which isn't always the case in many churches. Also, in other Arts centres there is an extra charge for the use of the piano! It is brilliant that we can use both the Church and the School room as rehearsal spaces. And there is a piano in each!

St Edward's is very flexible re the cost per hour of hiring the Church or school room. If a concert is being put on to raise money for charity, there is no charge (though a nominal contribution towards the cost of the heating is welcome).

There are many reasons why I love to use St Edward's, a few I have mentioned above, but one other thing is that we are always encouraged to **use the facilities** at the church in the Vestry and the School room.

Being able to have a cup of tea during or after a rehearsal is really, really important to me. It is a time for people to socialise and that is how we build our community. St Edward's enables that. It is so wonderful to be able to have the use of the School Room to spill into in the interval and at the end of a concert. You wouldn't believe the buzz we get in there, it is an opportunity for people to chat and make new friends. (We are even allowed to bring refreshments into the church.)

Having this space to socialise in is crucial to developing the Church as an Arts Centre and to encourage its use as a 'hub' in the local community – which is something St Edward's has been doing for years.

However, it would be a great improvement and it would make that so much easier if there were proper kitchen facilities in a bigger space.

St Edward's has always tried to provide access for wheelchair users, providing ramps and a wheel chair. However, the very nature of the building makes it difficult and hard work. The path up to the main entrance is uneven. We can open the two doors to get wheelchairs into the church but the main doors and the church doors are narrow even when opened.

At the concerts I organise we often have members of the audience who are wheelchair bound. It is very important to us to make access as easy as possible, we don't want to put people off coming.

There is also only one downstairs toilet in the church, this is not at present suitable for wheelchair users.

Jayne Thomas BMus(Hons) Goldsmiths College, University of London

Works as Musical Director, Conductor, Accompanist, Piano and Singing Teacher

## **Gentle Rain Ensemble: Jazz Workshop**

To whom it may concern,

My name is Julian Martin and I have been running the Gentle Rain Ensemble, a community improvisational group, for over a year now with the support of St Edward's Music and Arts Centre. The group has around 18 members from all walks of life who come together to create improvised music every Monday evening and put on 2 or 3 open concerts a year.

The church has made us very welcome and I know the group itself has gained many musical and social benefits from the sessions we run. Some of the group members have even gone on to form their own smaller ensembles.

St Edward's has been a perfect venue for me in many ways. The ease of local parking has helped to attract members from as far afield as Newport and Chepstow, and the venue has a grand piano and a wonderful performance space for our concerts. Given the older demographic of my group, however, it would definitely be improved further by more accessible toilet facilities, and some renovation of the access paths into the church.

I hope this is useful information. If you need any further detail, please let me know.

Your Faithfully,

Julian Martin

Music Tutor

## Forget Me Not Café

To whom it may concern:

In early 2017 we initiated a project to run a weekly "Forget Me Not" Café in the Schoolroom on Tuesday afternoons, coordinated by myself (Katherine Mayer), David Jewell and Jane McPherson. The café welcomes people who are living with dementia, recovering from strokes, or who are vulnerable or have mental and emotional issues and need a safe space to meet with other people. Carers are also warmly welcomed. Helpers are drawn not just from the congregations of the church, but from all the organizations that are based at the church.

On a typical Tuesday, there may be 10 or 12 people, with carers and helpers, making a total of perhaps 25-30 in the schoolroom, which is quite a crowd. People attend from our own locality in Roath, and also from Penylan and Cathays. The church is well located with available on-street parking and is the best facility locally available, providing a space where normal life and friendships can be shared for a few hours a week and where carers can relax. Music is especially popular with those affected by Dementia, and musicians can perform in the adjoining church building, which has a supportive acoustic.

Bringing carers and their "partners" together in a mutually supportive atmosphere is a very special opportunity for us all, attendees and volunteers alike. The chance to contribute to the well-being of others who are experiencing what some of us have already experienced with our own friends and family who are no longer with us is a rare privilege.

As the Café has grown we have become aware of shortcomings in the facilities that we would like to improve:

1. Improved access from the outside (the paths are slippery and uneven, with small holes).
2. Improved access once inside, the rear doors are very narrow, from outside into the porch and from the porch into the main part of the church.
3. Improved WC facilities - the present facility is unsuitable for wheelchair users, and some people require quite a long time, leading to queues.
4. Extending the schoolroom. Currently it is damp and lacks ventilation. There are no kitchen facilities (which would be good to encourage independence), and it is now too small for the group to grow much more, especially once wheelchair users are inside and tables in place.

Katherine Mayer

People's Subwarden, St Edward's Church

## Yoga

To whom it may concern:

I have attended services at St Edward's Church for three years, and in March 2017 I organised a weekly Yoga session, initially for 9 people in the schoolroom on Monday mornings. This is the maximum number of people that can be accommodated for Yoga in a room of this size. Due to demand in the locality (which is still growing, drawing from Cardiff and an approximate 15 mile radius) we now have four sessions a week, accommodating 36 people.

This is an invaluable community activity, open to all, to improve the wellbeing of all ages and abilities in the local area. We are fortunate to have a wonderful location, flexible and clean, which is great for Yoga classes, with helpful and friendly people to deal with.

There is now pressure on the facilities as the schoolroom and church are in almost constant use. Clearly it would be advantageous if the hall were larger, so that more people could be accommodated simultaneously. Also the WC facilities need to be improved. Storage space for chairs is needed, and kitchen facilities would be useful.

Lucy Clementson-Mills



*Be Happy, Healthy, Thriving*

## Redevelopment Feasibility Study – Design Guide

VOLUTEARCHITECTS 180219 Design Note 01a.docx

These notes are to be read in conjunction with the proposed drawing 17-1020-001-A, issued on the 19th February 2018.

### PRINCIPAL ENTRANCE

The location of the entrance has been retained in the proposals. However, the proposals show this as a remodelled space with the intent to create a more user friendly accessible entrance.

Currently, the entrance lobby has several doorways that have double door-sets that provide little margin for movement either side of the entrances of the doorways to allow entry for those who require carers to aid their movement.

The proposals on drawing 17-1020-001-A outline the proposed reconfiguration of the doorways. Turning circles for wheelchair users (1.5m diameter) have been provided on the drawings.

The proposal aims to reduce the solid and heavy connection between the west window of the nave, replacing the masonry structure with a glass link, reducing the visual impact of the connection. The west window will need to be carefully reconfigured, allowing the stone transom to extend to the neighbouring stone mullions to create a larger opening to aid those with mobility challenges. Modifications to the heating pipes located on the face of the west wall (church-side) will be required.

PROPOSALS

**EXISTING SCHOOL ROOM / PROPOSED COMMUNITY ROOM**

The current use of the existing school room requires the room to provide several functions, including a multi-use space, kitchen, tea point, storage, space for piano and various other objects. Given that the room is required to cover many functions, the space is not used to its full potential.

Given the potential of the existing school room, the proposal sets out to retain the existing school room, as this is a valued asset and provides a good level of accommodation and floor space. The proposal aims to extend the school room to the North, making use of the piece of land to the rear of the existing hall.

The connection between the proposed new building to the existing school room has been guided by the location of the north windows, with the proposal to remove the windows and sections of wall in-between, creating a large open span within the north wall which would be supported by a section of steel. The opening would project into a new space that would be sheltered by a glazed roof, this roof would wrap around the north and east elevations of the existing school room and connect with the new entrance to the south elevation. The space created to the north of the existing school room is seen as an extension to the current facility, maximising the floor space of the community room. The space will provide access to the ancillary facilities and also a link to the outside space. The glazed roof will allow for natural light be flooded into this area and into the community room.

The plan shows the existing entrance into the community room remodelled with a glazed screen, and the door entry to the community room further north of its current location.

### **EXISTING TOILETS / PROPOSED TOILETS**

The church has one toilet on the ground floor that provides a basic level of facility for those who are abled bodied. The toilet is not considered a wheelchair friendly toilet. The proposals aim to address this.

The proposal outlines three toilets, one disabled, one unisex, and one which provides a baby-change facility within the toilet enclosure. The toilets are accessible from a corridor link that connects with the lobby between the church and the proposed community room. The toilets have been located in this location for several reasons, the first being that the drainage is in this location resulting in less changes to the drainage system. Secondly, the toilets need to serve the church and the community room, possibly when both spaces are in use. In addition, should the community room not be in use, the visitors to the church will need to gain access to the facilities.

### **EXISTING KITCHEN / PROPOSED KITCHEN**

The existing facilities provided within the school room are inadequate and do not provide a provision for the developing needs of the community. The proposal aims to address this.

The kitchen is located within the new pitched roof building, and accessible from the community room. The kitchen is a domestic style kitchen, providing basic refreshments for the

users of the building. Windows have been designed into the west gable to allow views from the kitchen into the new community garden.

## **STORAGE**

Storage is not prevalent in the current building, with the school room doubling up as storage space for chairs/tables etc. There are existing storage units within the east of the school room, these could be retained if it was seen as useful.

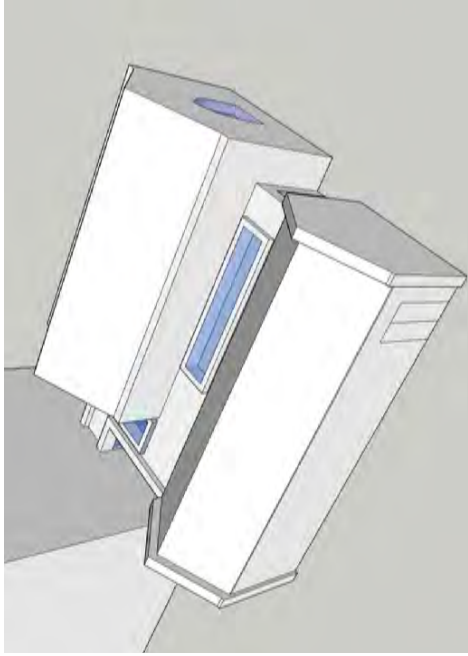
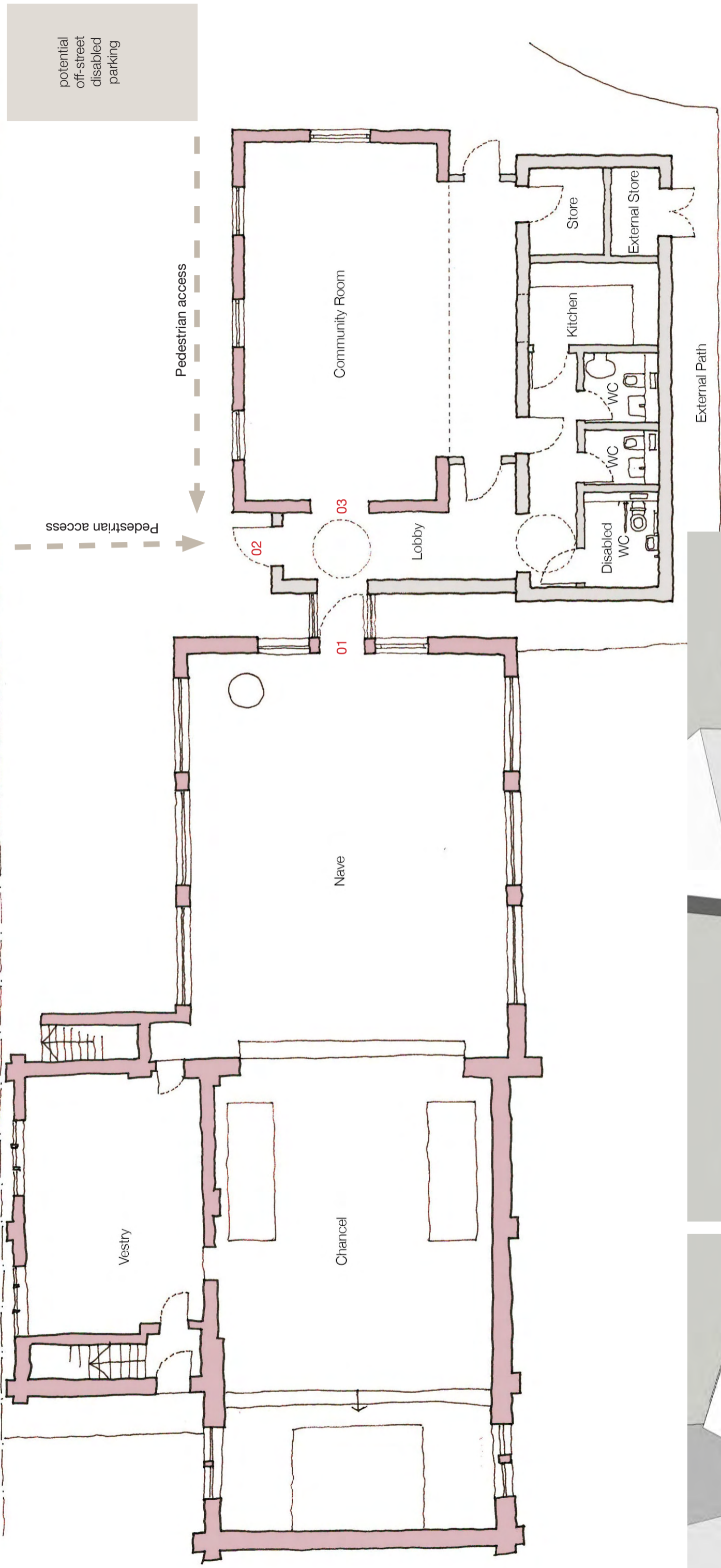
The proposal aims to provide a new store room for the community room, with a link directly accessed from the space.

An external store has also been included within the proposal. The external store is located to the rear of the building, with direct access to the adjacent garden areas.

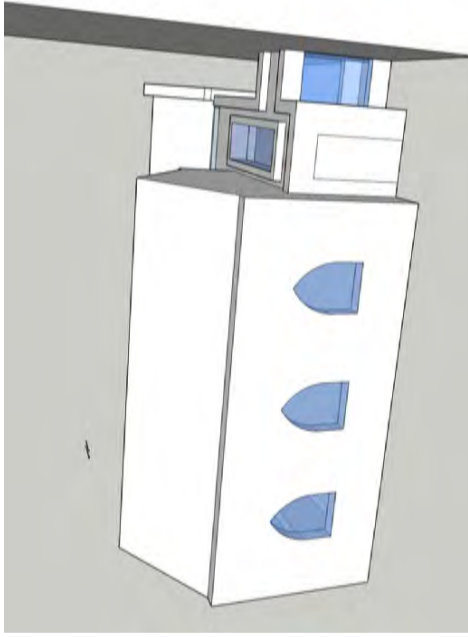
## **LANDSCAPING**

The location of the proposed building will require changes to the gradients to the north-west garden area and will require some retaining walls to be developed. The section of garden to the west is proposed to be re-purposed for community well-being, with those users finding benefits being involved in community gardening.

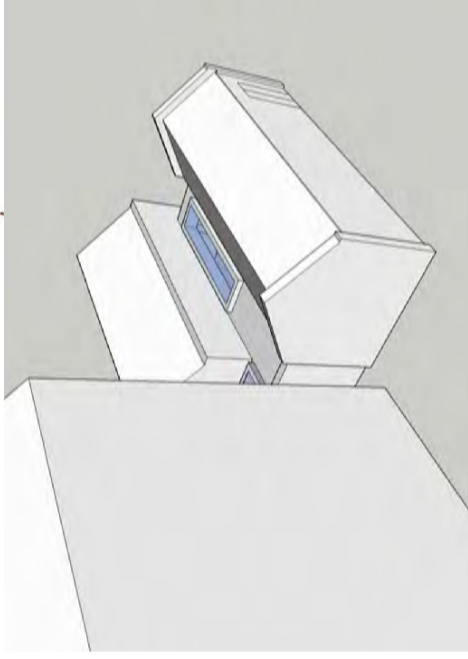
To the principal south entrance, the proposal would be to re-grade the landscaping to accommodate level access to the principal entrance, removing the need for a ramp. This area would link to the adjacent path and potentially to a new disabled car parking area.



1. Birds-eye view from the north-west



2. Birds-eye view from the south



3. Birds-eye view from the north-east

Key outlining proposed entrances

- 01** Replace existing double doors with single glazed door. The proposal would be for the door to be automatically operated under the operation of push-buttons from both sides.
- 02** Glazed single entrance door accessible from adjacent re-graded landscaping, providing level access to the principal entrance.
- 03** Existing entrance to the school room to be considered for retention. Would be useful to have a direct link to the school room and for turning circles for church activities.

<p><b>Notes:</b> Drawings are based on survey data and may not accurately represent what is physically present.</p> <p>Do not scale from this drawing. All dimensions are to be verified on site before proceeding with the work.</p> <p>All dimensions are in millimeters unless noted otherwise.</p> <p>Volute Architects shall be notified in writing of any discrepancies.</p>											<p><b>Notes:</b> Drawings are based on survey data and may not accurately represent what is physically present.</p> <p>Do not scale from this drawing. All dimensions are to be verified on site before proceeding with the work.</p> <p>All dimensions are in millimeters unless noted otherwise.</p> <p>Volute Architects shall be notified in writing of any discrepancies.</p>		
				</									

Notes:

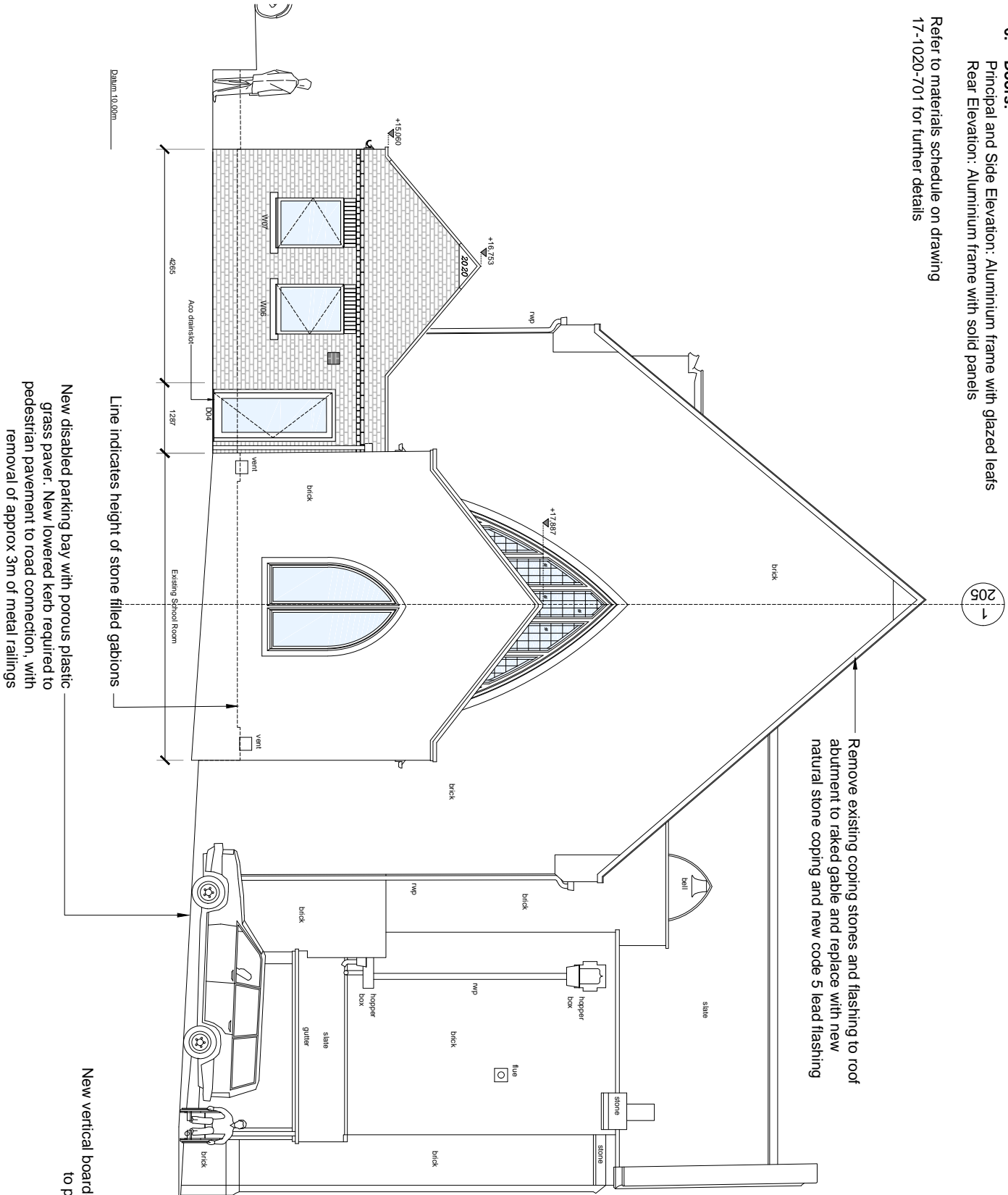
- Walls:** Wienerberger Athena Blend facing brickwork in English garden wall bond (to match the church), with dog-toothing course to eaves level and brick on edge to lintels
- Pitched Roof finish:** New natural welsh slate roof finish with decorated timber fascia board at closed eaves
- Flat Roof finish:** Icopal single ply membrane
- Rainwater goods:** Alumasc heritage cast aluminium moulded gutters and square downpipes, in black
- Window:** To new openings aluminium framed double glazed casement opening lights with Forest of Dean natural stone cills and brick on edge lintels

To existing window openings on the south elevation of the existing School Room, new timber framed windows with bottom opening casement lights and fixed lights above

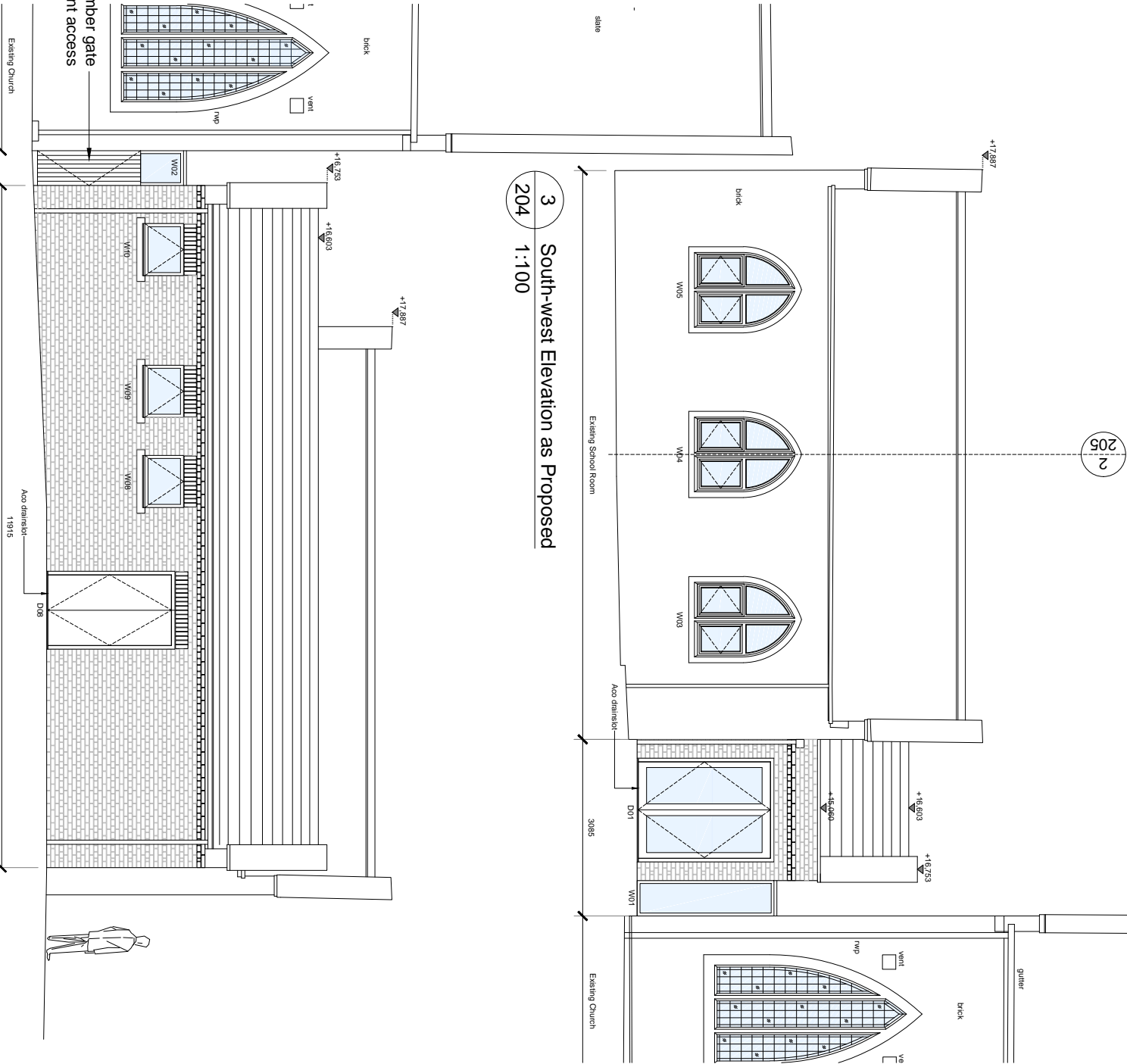
6. Doors:

Principal and Side Elevation: Aluminium frame with glazed leafs  
Rear Elevation: Aluminium frame with solid panels

Refer to materials schedule on drawing  
17-1020-701 for further details

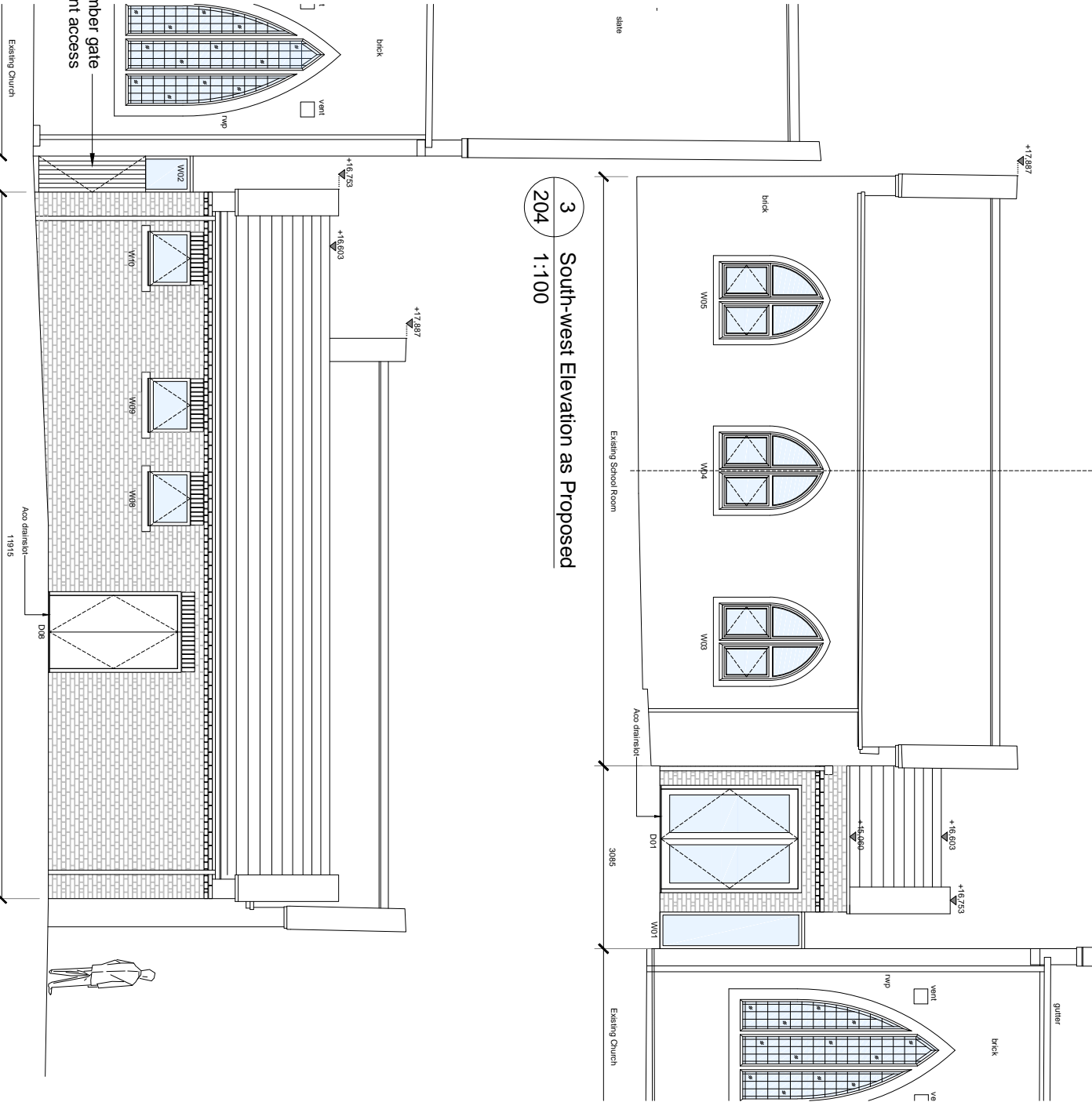


1 North-west Elevation as Proposed  
204 1:100



2 North-east Elevation as Proposed  
204 1:100

3 South-west Elevation as Proposed  
204 1:100



Notes:  
Drawings are based on survey data and may not accurately represent what is physically present.  
Do not scale from this drawing. All dimensions are to be verified on site before proceeding with the work.  
All dimensions are in millimeters unless noted otherwise.  
Valuing Architects shall be notified in writing of any discrepancies.

ISSUE	DATE	DRAWN	CHECKED	DESCRIPTION
A	03.09.2018	AN	AN	Updates to windows and materials and development of Stage 3 information for the purposes of planning
First Issue	10.06.2018	AN	AN	First Issue for client and design team comment

CLIENT	THE PCC OF ST EDWARDS CHURCH
PROJECT	ST EDWARDS CHURCH COMMUNITY ROOM REDEVELOPMENT

DRAWING TITLE	ELEVATIONS AS PROPOSED
SIZE & SCALE	A3 @ 1:100

JOB NUMBER	17-1020
DRAWING NO.	204
REVISION	A